



IAG Service Networks in Google Earth

Carey Noll
CDDIS Manager
NASA GSFC

GGOS Bureau for Networks and Communications
April 22, 2009



A historical map of the world, likely from the 17th or 18th century, showing continents and oceans with Latin labels. The map is centered on the Atlantic Ocean and shows the Americas on the left and Europe and Africa on the right. The title "IAG Service Networks in Google Earth" is overlaid in large white text.

IAG Service Networks in Google Earth

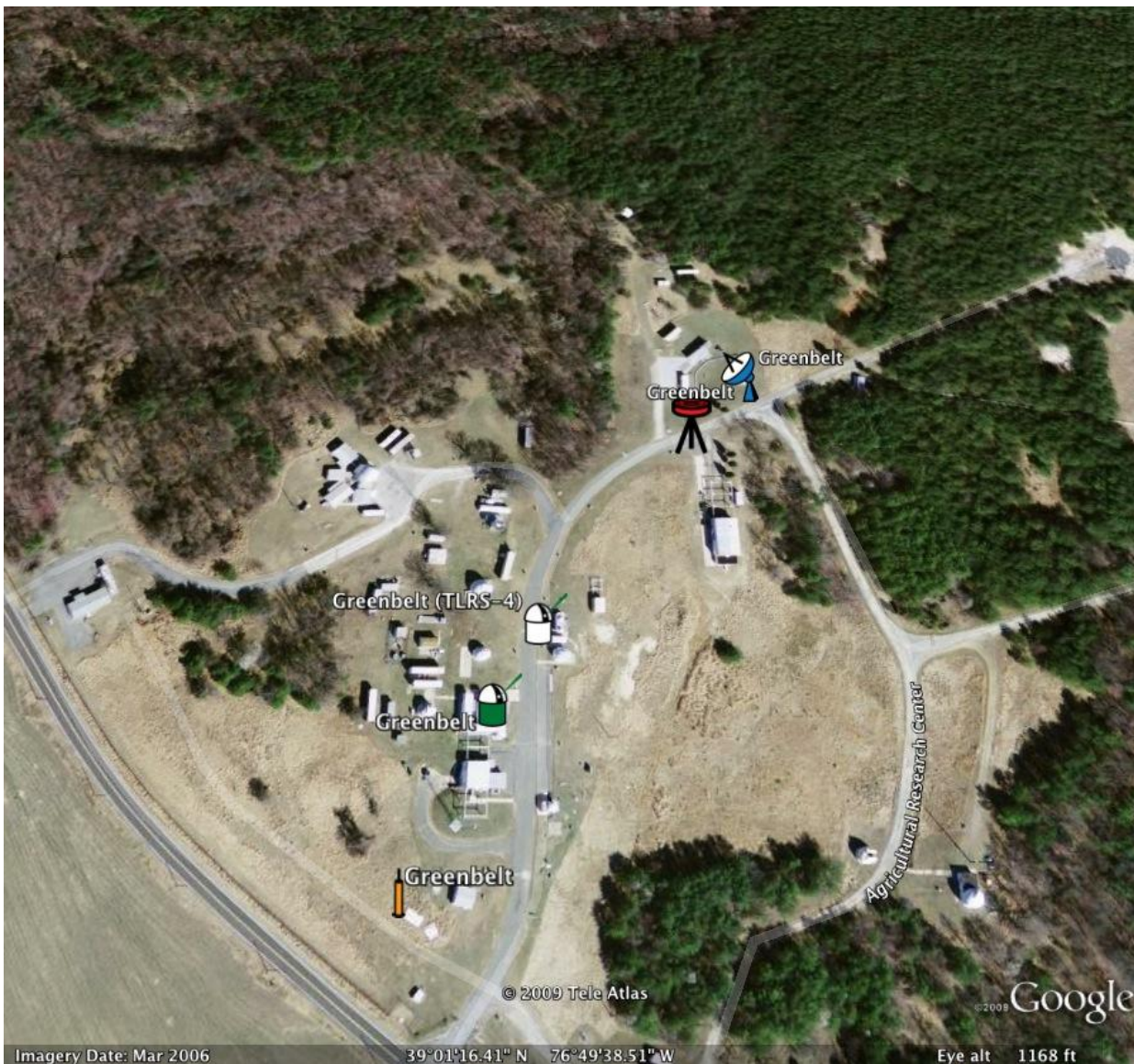
- The Google Earth layers are available for download from the CDDIS:
 - http://cddis.gsfc.nasa.gov/kml/ids_layer.kml
 - http://cddis.gsfc.nasa.gov/kml/ilrs_layer.kml
 - http://cddis.gsfc.nasa.gov/kml/igs_layer.kml
 - http://cddis.gsfc.nasa.gov/kml/ivs_layer.kml
- To display layers in Google Earth application:
 - Enter above link in browser
 - After download, launch Google Earth application
 - In Google Earth File->Open-><<KML file>>
 - Layer appears in left under Places







Zoom in to Greenbelt MD



Zoom and Click on Site to View Details

International Laser Ranging Service

IGS

IVS

ILRS

Grasse

ILRS Site Code = GRSM
Country = France
Station = 7845
DOMES Number = 10002S002
Plate = Eurasian

Latitude = 43.7546
Longitude = 6.9216
Elevation = 1323.1
XYZ Coordinates = (4581692.1,556196,4389355.1)

System = Fixed
Subnetwork = EUROLAS
Log File = [GRSM_sitelog.html](#)

Fixed ILRS Site
Mobile ILRS Site

Image © 2009 DigitalGlobe
Imagery Date: Jul 20, 2004
43°45'16.61" N 6°55'16.70" E
Eye alt 2888 ft

Google

